

INSTALLATION MANUAL

PINCER



INTRODUCTION

Thank you for placing your confidence in ERREKA Puertas Automáticas and for choosing one of our doors. We recommend that you read this installation manual carefully for correct installation of the door. Remember that the correct operation of your automatic door depends on the quality of your work.

ERREKA Puertas Automáticas is not liable for any damage that may be caused by not correctly following the instructions given in this Installation Manual

Nº Revision	Rev00	Date	01/04/09
-------------	-------	------	----------

CONTENTS

0. RECEIPT OF MATERIAL
1. CALCULATION OF LEAF MEASUREMENTS
2. MOUNTING THE FIXED LEAVES
3. ASSEMBLING THE MOVING LEAVES
4. MOUNTING THE MOVING LEAVES

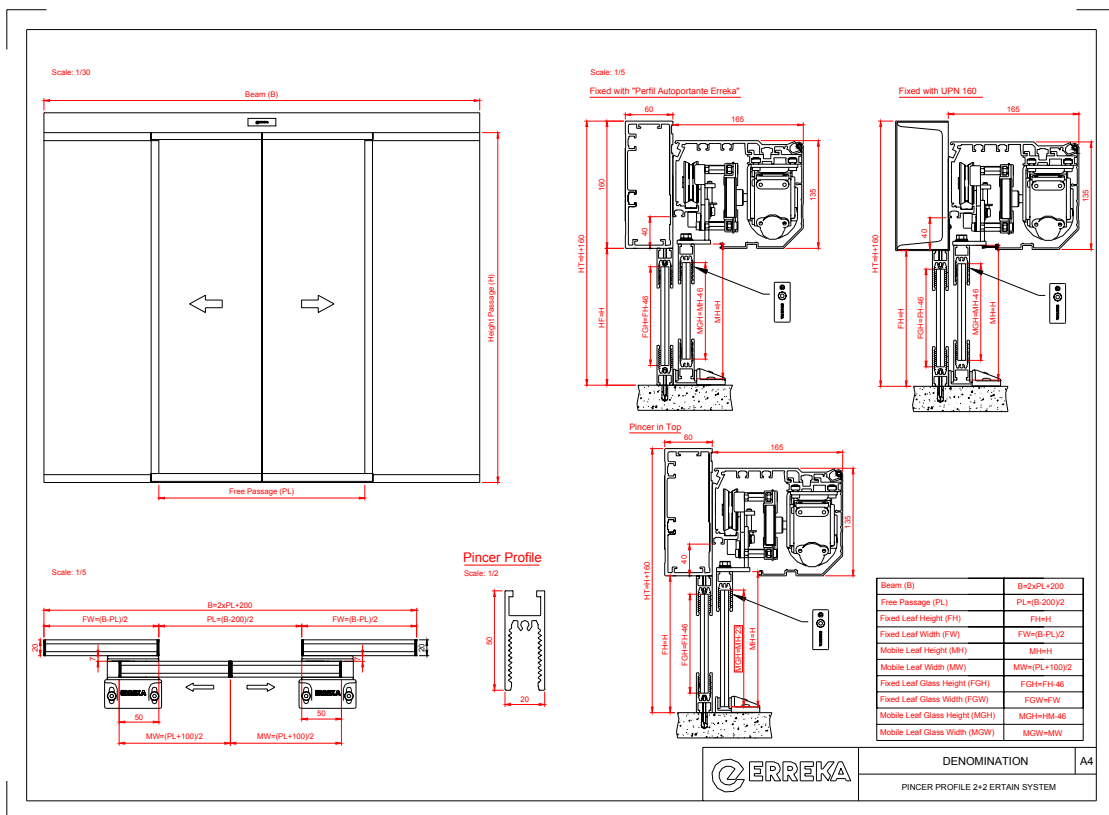
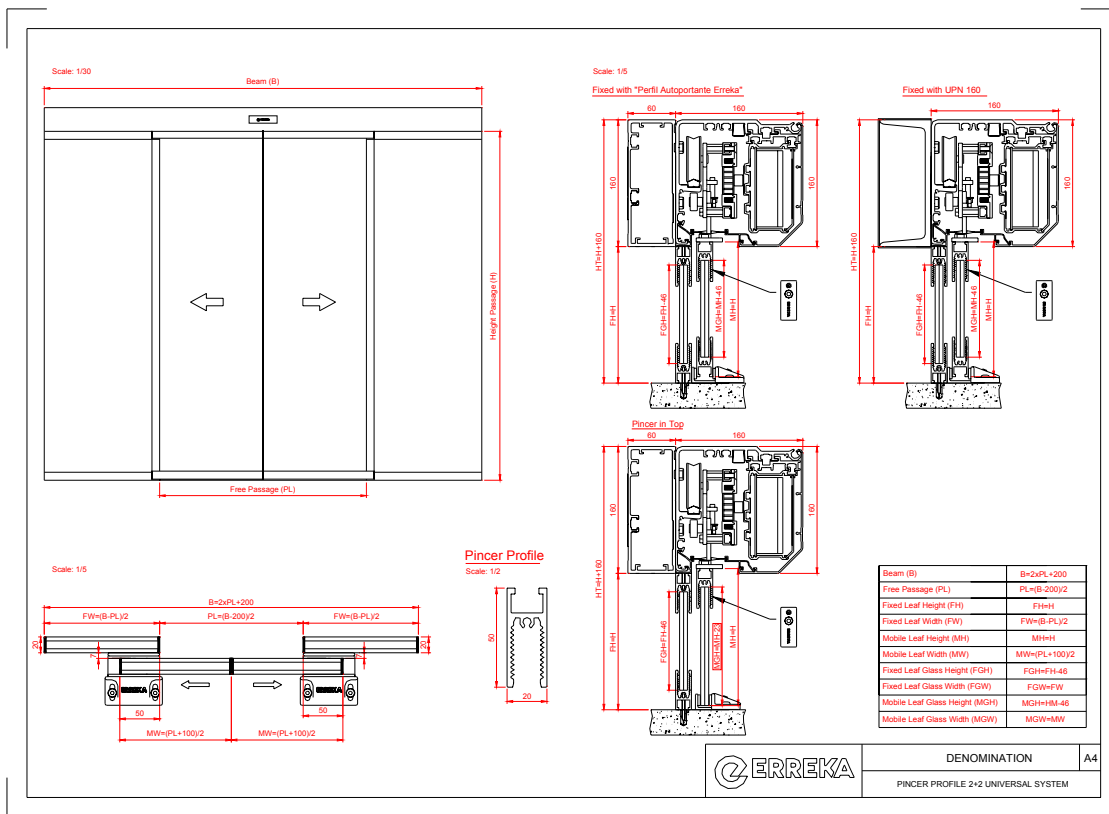
0. RECEIPT OF MATERIAL

The customer should receive the packages sent by Erreka in perfect condition. In addition to the frames, the essential accessories for mounting are also supplied in the automatism accessory box.

If the articles have received any knocks in transit, this should be indicated on the transport delivery note, as the carriers will be liable for any damages.

Note: the sections contained in the different packages should not be mixed up. Each leaf must only be mounted with the sections supplied in its own package.

1. CALCULATION OF LEAF MEASUREMENTS

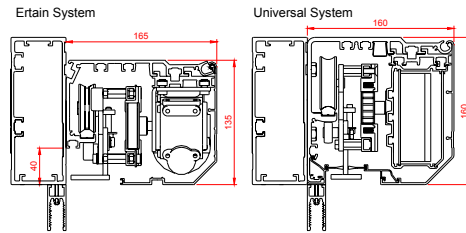


2. MOUNTING THE FIXED LEAVES

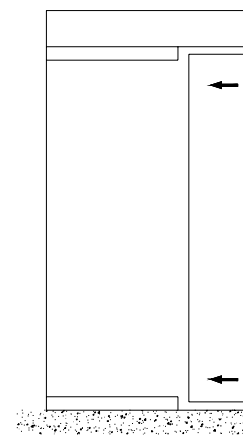
For a correct installation, the following steps should be followed;

2.1- First fixed the upper Pincer frames (see the diagram). Then mark the point where they will be fixed the bottom Pincer frames to the floor. Use a spirit level to help make the marks, to ensure that the leaf is perpendicular to the floor.

-Then fixed the bottom Pincer frame to the floor.

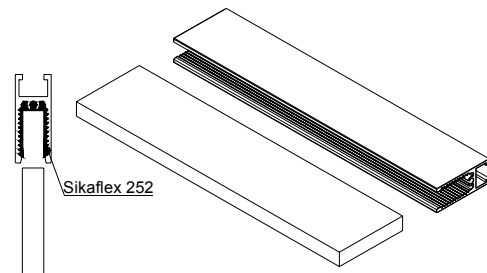


2.2- When the two Pincer frames are in place, fill them with silicone. Thread the fixed leaves in from the side, sliding the glass pane through the lower Pincer space. Then seal the lower part with silicone and screw the two plastic covers to the inside of the Pincer.



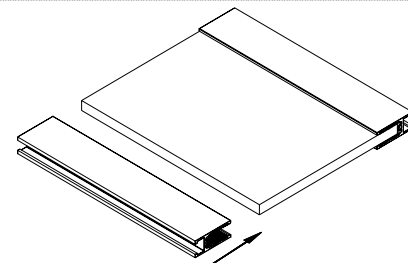
3. ASSEMBLING THE MOVING LEAVES

3.1- Fix the Pincer frames to the glass panes with special adhesive (Sikaflex 252).

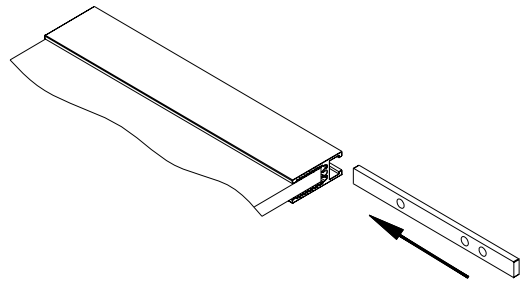


3.2- Fixed the bottom Pincer frame to the glass with special adhesive (Sikaflex).

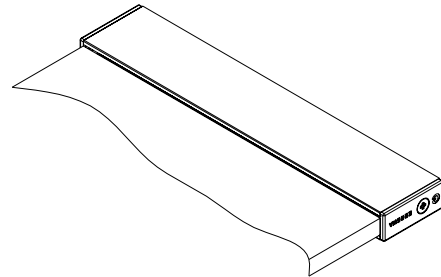
- Introduce the Pincer little by little with a hammer of plastic. Go measuring the longitude of leaf until getting the measure that we need for the installation.



3.3- Place the fastenings (2 per leaf) in the top frame member of the moving leaves and bolt them firmly in place.



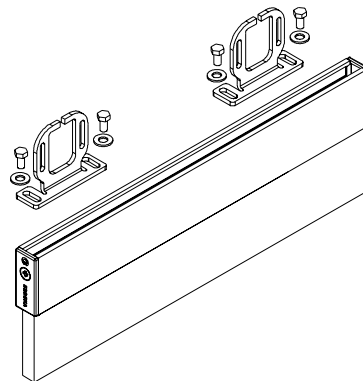
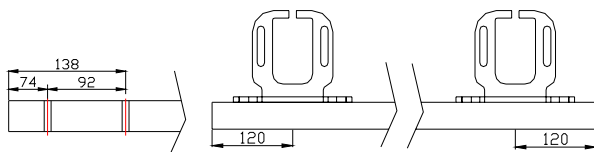
3.4- Fixed the plastic covers.



4. MOUNTING THE MOVING LEAVES

4.1- Fix the hanger bars onto the two previously mounted fastenings.

- Repeat this procedure for the other leaf.



4.2- Level the leaves and place them perpendicular to the floor.

- Position the guide on the floor.

- The distance between the fixed leaves and moving leaves must be 7mm.

