

# INSTALLATION MANUAL

## FINA FRAME



## **INTRODUCTION**

Thank you for placing your confidence in ERREKA Puertas Automáticas and for choosing one of our doors. We recommend that you read this installation manual carefully for correct installation of the door. Remember that the correct operation of your automatic door depends on the quality of your work.

ERREKA Puertas Automáticas is not liable for any damage that may be caused by not correctly following the instructions given in this Installation Manual

Nº Revision	Rev00	Date	01/04/09
-------------	-------	------	----------

## **CONTENTS**

0. RECEIPT OF MATERIAL
1. CALCULATION OF LEAF MEASUREMENTS
2. ASSEMBLING THE LEAVES
3. MOUNTING THE FIXED LEAVES
4. MOUNTING THE MOVING LEAVES

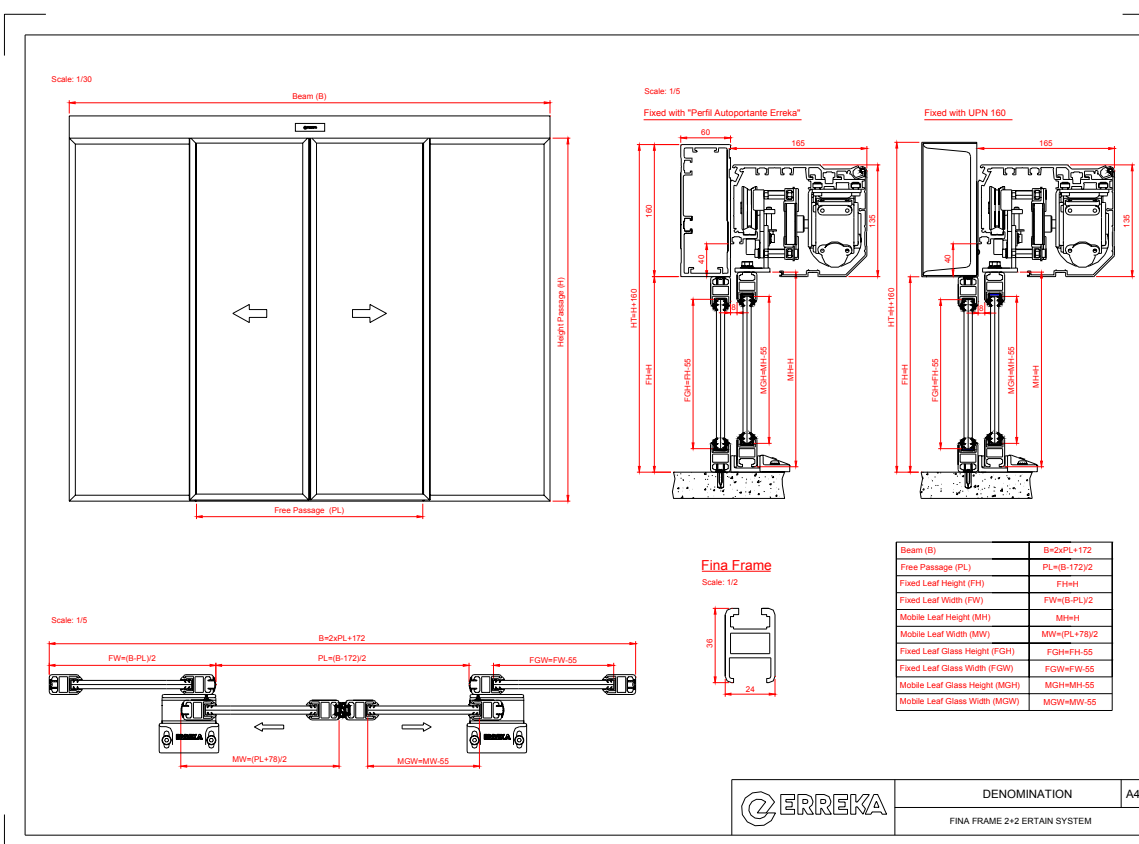
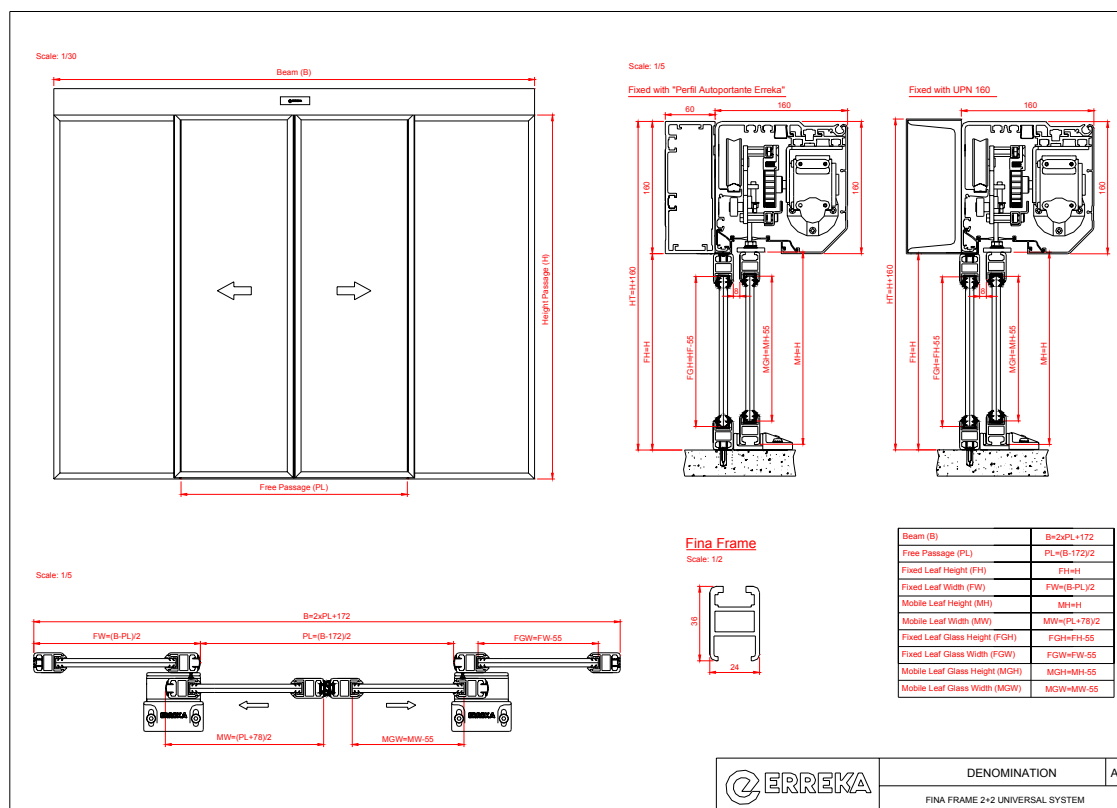
## **0. RECEIPT OF MATERIAL**

The customer should receive the packages sent by Erreka in perfect condition. The content of the packages - "Fixed leaf frames" or "Moving leaf frames" - should be indicated on each one. The leaves are packaged separately in their respective boxes. In addition to the frames, the essential accessories for mounting are also supplied in the automatism accessory box.

If the articles have received any knocks in transit, this should be indicated on the transport delivery note, as the carriers will be liable for any damages.

**Note:** the sections contained in the different packages should not be mixed up. Each leaf must only be mounted with the sections supplied in its own package.

# 1. CALCULATION OF LEAF MEASUREMENTS

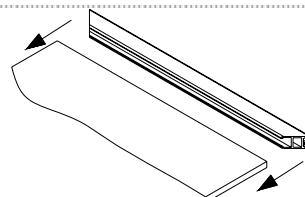


## 2. ASSEMBLING THE LEAVES

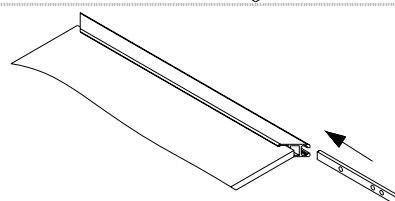
The fixed leaves and the moving leaves are mounted in exactly the same way. However, the frames of the moving leaves must be differentiated from those of the fixed leaves, as the fixed leaves are wider than the moving leaves.

2.1- Place all the parts for assembly beside the door leaves.

- Don't put the rubber.



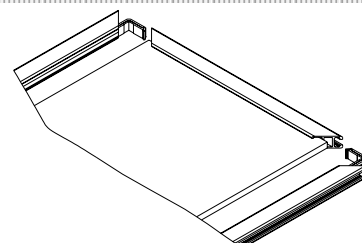
2.2- Important: Place the fastenings (2 per leaf) in the top frame member of the moving leaves and bolt them firmly in place.



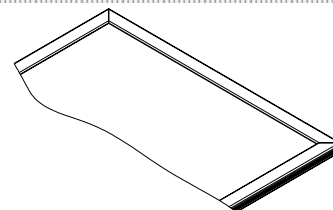
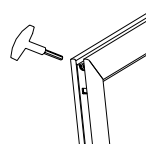
2.3- Slot the bracket into the top part of the vertical frame members.

- Place the brush in the overlapping vertical frame member of the fixed leaves.

- Insert the vertical frame members into the horizontal top frame member and onto the glass. The rubber strip must make good contact.



2.4- Fix the frames in place using a size 4 Allen key. Match up the mitre joints as closely as possible.

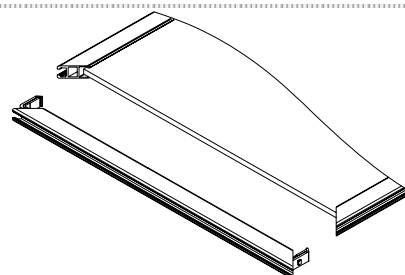


2.5- Slot the bracket into the sides of the horizontal bracket frame member.

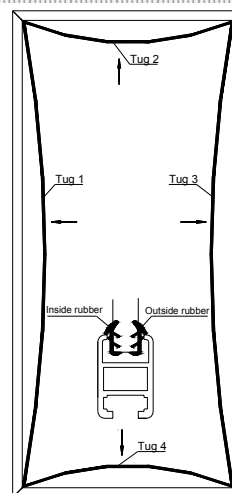
- Put the frame member in place, so that it correctly closes off the glass pane.

- Anchor the lower brackets to leave the frame members completely bracketed.

- Important: when the frame members have been fixed in place, remove the screws from the fasteners.

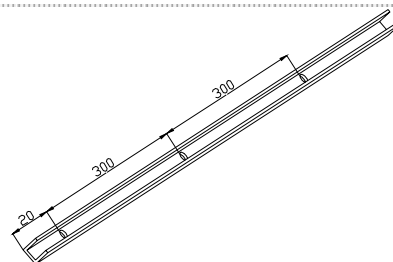


2.6- Put 4 tug of rubber, between the frames and the glass, in each side of the door (Outside and inside).

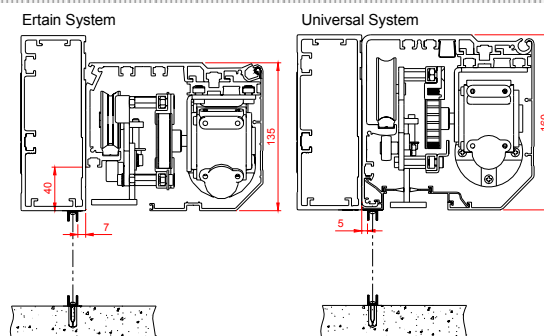


### 3. MOUNTING THE FIXED LEAVES

3.1- Place the fixed leaf in the location in which it is to be installed. The distance between the holes must be 300mm aprox.

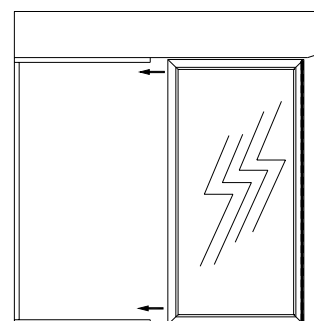


3.2- First put the upper U and then put the floor U in place. It must be fixed parallel to the upper U.

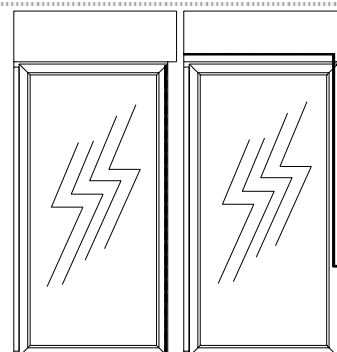


3.3- Place the fixed leaf in the location in which it is to be installed. Take the fixed leaf, slot it into the top and bottom U sections, then slide the leaf to the wall.

When the leaf is in position, apply a silicone seam to all the joints and seals with the floor, wall and automatism.



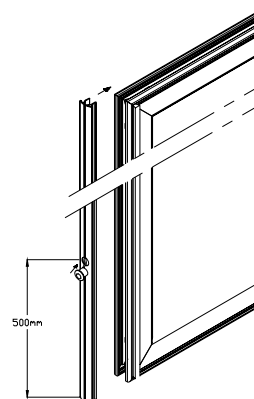
3.4- Installations with photocell: Make a hole in the case bead at 500 mm from the floor. Thread the photocell cable through it. Leave the cable hanging.



- Make a hole with the same diameter as the photocell transmitter/receiver at 500 mm from the floor in the cover sections, for insertion of the photocell transmitter and receiver.
- Place the overlapping sections on the fixed leaves.
- Place the transmitters and receivers in their housing.

Note: Take care when fitting the cover.

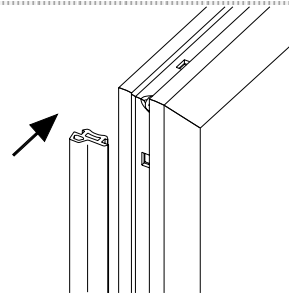
**Attention:** Put the brush in the vertical frames, that they Hill concreate with mobile frames in Close position.



## 4. MOUNTING THE MOVING LEAVES

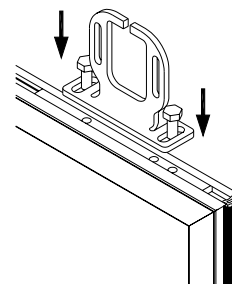
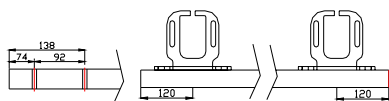
4.1- Place the closing rubber strip on one of the moving leaves.

- Repeat this procedure for the other leaf. Ensure that it is facing in the opposite direction to the first leaf, so that it will close tightly.



4.2- Fix the hanger bars onto the two previously mounted fastenings.

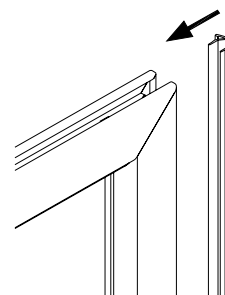
- Repeat this procedure for the other leaf.



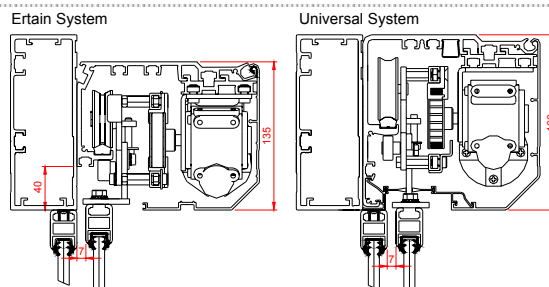
4.3- Place the cover section on the moving leaf.

- Repeat this procedure for the other leaf.
- For improved fixing, apply silicone to the sides.

**Attention:** Put the brush in the vertical frames, that they will concreate with mobile frames in Close position.

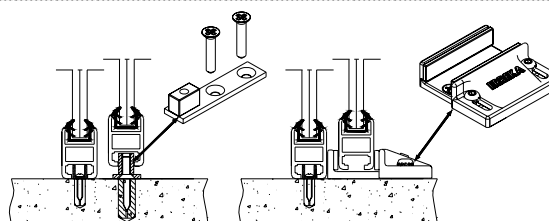


4.4- Hang the moving leaf from the carriers and position it at 7 mm from the fixed leaf.



4.5- Level the leaves and place them perpendicular to the floor.

- Position the guide on the floor.



4.6- Adjust the leaves correctly, ensuring they are well-aligned and make perfect contact.

